



Building the Foundation's Future

FY2016 Annual Report | Phi Sigma Rho Foundation

Contents

About	1
Board of Directors	2
Volunteers	2
Letter from the President.....	3
Goals & Highlights.....	4
Grants to the Sorority	5
Scholarships & Winners.....	7
Light the night with PSRF	9
Celebration of Donors	10
Financial Statement	12
Legacy of Giving	14

About

► **Mission:**

The Phi Sigma Rho Foundation exists to promote social responsibility, personal integrity, and lifelong enrichment by providing professional, educational, philanthropic, and leadership development opportunities for the members and friends of Phi Sigma Rho Sorority.

► **Vision:**

The advancement of Phi Sigma Rho Sorority and community through the encouragement of selfless giving .

► **Motto:**

“Building the future together.”

Board of Directors

- ▶ **President:** Christine Jackson, *Purdue-Alpha*
- ▶ **VP of Development:** Amara Bojrab, *Purdue-Alpha*
- ▶ **VP of Programming:** Dominique Fantasia, *Penn State-Lambda*
- ▶ **VP of Publicity:** Janelle Becker, *Ohio State – Beta*
- ▶ **VP of Strategy:** Rebecca Schmidt, *Cincinnati-Alpha Beta*
- ▶ **VP of Donor Engagement:** Kathryn Shrock, *Purdue-Alpha*
- ▶ **Treasurer:** Lacey Chavez, *Arkansas-Kappa*; Lexi Heironimus, *Wright State-Alpha Zeta*
- ▶ **Secretary:** Mary McWilliams, *Ohio State – Beta*
- ▶ **Ex-Officio:** Allison Lenhoff, *Purdue-Alpha*; Katie Shesko, *Pittsburg-Zeta*

2016 Volunteers

- ▶ Melanie Andras, *Purdue-Alpha*
- ▶ Jessica Berman, *Toledo-Delta*
- ▶ Alex Caliguire, *Toledo-Delta*
- ▶ Caryn Carlson-Rothe, *Washington-Mu*
- ▶ Lacey Chavez, *Arkansas-Kappa*
- ▶ Rachel Chicchi, *Penn State-Lambda*
- ▶ Jenna Daghestani, *Toledo-Delta*
- ▶ Lara Day, *Purdue-Alpha*
- ▶ Bridget Harrington, *Toledo-Delta*
- ▶ Julie Hayden, *Pittsburgh-Zeta*
- ▶ Rosalie Krob, *Purdue-Alpha*
- ▶ Missy Mercurio, *USCD-Chi*
- ▶ Blair Pellatt, *Purdue-Alpha*
- ▶ Teresa Phillips, *Connecticut-Theta*
- ▶ Victoria Platt, *Ohio State-Beta*
- ▶ Jennifer Roach, *Purdue-Alpha*
- ▶ Renee Rigrish, *Wright State-Alpha Zeta*
- ▶ Abby McDonald Schwartz, *Purdue-Alpha*
- ▶ Tori Trout, *Vanderbilt-Alpha Eta*
- ▶ Shannon Vondrak, *Purdue-Alpha*
- ▶ Katherine Wagner, *Kentucky-Epsilon*
- ▶ Charlene Yauch, *Purdue-Alpha*
- ▶ Kendall Huddleston, *Kentucky-Epsilon*

Letter From the President



Christine Jackson
Purdue - Alpha
Foundation President

It is an honor to serve as President of the Phi Sigma Rho Foundation! We continue to show growth since our 2005 inception. Our Foundation Directors and volunteers have been collaborating to support the efforts of Phi Sigma Rho Sorority!

In 2016, the Foundation offered three scholarships, provided funding for LEAP, and encouraged the chapters to coordinate their philanthropy efforts with the *Leukemia and Lymphoma Society* that has surpassed the \$20,000 mark two years in a row!

Thank you to all of our donors. Your selfless giving helps us persevere in our mission to provide leadership and educational support. This financial platform encourages the Sorority to develop programs that empower, strengthen skills and advance knowledge, growing sisters to be pacesetters within our workplaces and communities.

A special thanks to one of our Founders, Abby McDonald Schwartz, who initiated a \$25,000 donation from the *Lewis A. and Carol W. McDonald Charitable Trust* for the Foundation's Scholarship Fund. This donation encourages the continuation of granting scholarships for many years to come as well as gives the Foundation the opportunity to allocate future donations toward other programs.

May I once again encourage your volunteerism. Whether in service or monetary, your contributions are vital to the continuation of our organization. Accept life's challenges as opportunities to overcome. Replicate the good within and impart it to others. It's a beautiful thing!

Christine Jackson

Goals & Highlights

▶ 2016 Highlights:

- ▶ Three **\$1,000** scholarships awarded to three outstanding sisters
- ▶ **\$2,769** granted to the Sorority for the education costs of the Leadership Conference held at Purdue University
- ▶ Joined chapter's philanthropic efforts together for a total of **\$26,546** for the Leukemia and Lymphoma Society's *Light the Night Walk*
- ▶ **155** generous donations from **62** donors and **9** corporations who gave back in 2016
- ▶ **32%** of donors from 2015 donated again in 2016; **21%** of donors gave a gift three years in a row!

▶ Goals for 2017:

- ▶ Provide a **\$10,000** grant to Phi Sigma Rho for leadership and education programming at Convention 2017.
- ▶ Endow / create a sustainable funding stream for the Sarah Rogers McClure Scholarship.
- ▶ Update the website with a more streamlined and easy to use interface.
- ▶ Coordinate philanthropic efforts with Phi Sigma Rho to facilitate raising **\$25,000** for the Leukemia and Lymphoma Society.



Grants to the Sorority

The Phi Sigma Rho Foundation provides educational grants to the Phi Sigma Rho Sorority through a formal grant process. The Sorority currently uses these grants to support the costs of educational sessions at Conventions and Leadership Conferences.

In 2016, the Phi Sigma Rho Foundation approved a grant of **\$2,769** for the LEAP Conference at Purdue University. Throughout the Convention, attendees heard from various speakers who helped them strengthen many life skills, and multiple attendees received their LEAP certifications.

Since the PSR Foundation is a not-for-profit organization, all of our scholarships and grants are **100%** supported by the generous contributions of our donors. Over the years, we have provided a total of **\$35,093** in grants to further support the personal and professional growth of the Phi Sigma Rho sisters and friends. Although much of the cost for Conventions and Leadership Conferences are eligible for Foundation grants, the full amount may not be granted by the Foundation due to limited funds. With the help of our generous donors, we hope to increase our future grant awards in order to fully cover the costs of the Sorority's leadership development and educational programs.



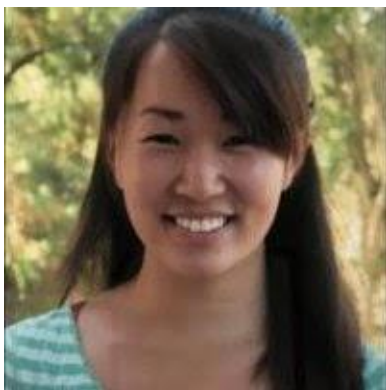
Scholarships & Winners

Annual scholarships are open to initiated members of Phi Sigma Rho and can only be used for tuition and fees going toward an accredited degree program. To date, we have awarded a total of **\$19,000** to 31 accomplished sisters. With your donations, we can continue supporting our sisters' educational goals.

Below are the three scholarships we currently offer:

- ▶ **Merit Scholarship** — awards a sister who excels academically, is a leader within $\Phi\Sigma\rho$, and performs exceptional acts of community service.
- ▶ **Leadership Scholarship** — rewards leadership not only within Phi Sigma Rho but within all aspects of life. A minimum GPA of 2.75 is necessary for this scholarship.
- ▶ **Sarah Rogers McClure Memorial Scholarship** — recognizes a sister who always puts others first and takes action because it is the right thing to do, not for attention or personal gains. The ideal recipient is someone who is active in Phi Sigma Rho and also participates in community service or other meaningful activities. A minimum GPA of 2.75 is necessary for this scholarship.

We would love to award more scholarships to the many accomplished Phi Rhos in our sisterhood. If you are interested in starting a scholarship through the Foundation, please email our VP of Programming at programming@phisigmahofoundation.org.



Rachel Rosenzweig
Washington - Mu

Rachel Rosenzweig **Merit Scholarship Recipient**

"Thank you so much Phi Sigma Rho Foundation for selecting me as the recipient of the 2016 Merit Scholarship. I am beyond grateful for this honor and support as I pursue my Ph.D. in Materials Science and Engineering at the University of California, Irvine (UCI). Joining the sorority my first quarter of my freshman year at the University of Washington (UW) was the best decision of my undergraduate career, as my chapter helped me become a stronger leader and scholar. My best memories from Phi Rho were serving as the 2014 PSR Leadership Conference Intern and Mu Chapter President, forming the STEM Outreach Committee, and attending chapter socials, intramurals, and retreats where I got to learn more about and be inspired by my sisters! After graduating from the UW Mu Chapter, I now serve as the Alumna Advisor for UCI Pi Chapter. Thank you again to the Phi Sigma Rho Foundation, UW Mu Chapter, and UCI Pi Chapter for your endless friendship, scholarship, and encouragement!"

Scholarships & Winners



Mary Turner
Florida - Tau

Mary Turner

Leadership Scholarship Recipient

"Receiving the Phi Sigma Rho Foundation's Leadership Scholarship is such an honor. The Phi Sigma Rho sisterhood at the University of Florida was the first family I found in college and it is thanks to the leadership opportunities and encouragement it has provided me that have allowed me to become the strong leader I am today. I strive to serve my community alongside my sisters and pave the path for ourselves and all of the women in the STEM field who will come after us through the virtues of Phi Sigma Rho. I would like to thank the Phi Sigma Rho Foundation, all of the scholarship donors, the sisters of the Tau chapter, and Veronica Aiu and Erin Magliozzi for their letters of support that helped me to receive this accord. Again, I am so grateful to have been selected to receive this scholarship. The financial burden of college is great and this will truly aid in my upcoming year and allow me to focus on finding what specialty of Environmental Engineering I wish to pursue in the future."



Tayla Mandelkern
Connecticut - Theta

Tayla Mandelkern

Sara Rogers McClure Memorial Scholarship Recipient

"I am honored to receive the Sarah Rogers McClure Memorial Scholarship for 2016. This scholarship will help to cover my tuition costs at University of Pittsburgh School of Medicine as a first year student. My mother's battle with cancer and its deep impact on my family encouraged me to pursue a career in medicine. I am extremely grateful for the opportunity to learn to become a physician and to eventually provide others with the medical and personal care they require during vulnerable times.

My sisters at Phi Sigma Rho Theta chapter have encouraged and motivated me through both my time as an active sister and as an alumna. I am tremendously appreciative for the support and love I have received through my chapter and the whole Phi Sigma Rho community."

Light the Night with PSRF

Since 2010, leukemia and lymphoma education has been one of the major national philanthropies of Phi Sigma Rho. Having sisters and family members who experienced blood cancers first hand, Phi Sigma Rho wanted to have a part in helping find a cure. To further unite the chapters in their philanthropic efforts, the Phi Sigma Rho Foundation launched the Light the Night campaign with The Leukemia and Lymphoma Society's [Light the Night Walk](#) in 2015. With this campaign, active and alumnae chapters can easily find and organize walks, or create their own event to benefit the [Leukemia and Lymphoma Society](#).

Going in to the second year of the campaign for the Leukemia and Lymphoma Society, the Foundation decided to increase the philanthropic goal to \$20,000 based on last year's success. The chapters and groups participating did not disappoint in showing overwhelming support, allowing us to crush the goal again this year! By December of 2016, the \$20,000 goal had not only been met, but the teams participating had raised **\$26,546** for the Leukemia and Lymphoma Society!

The Foundation would like to thank all the participants for their philanthropic efforts and support for the Light the Night campaign. The chapter and individual top fundraisers will be honored at the Foundation Luncheon at the Phi Sigma Rho National Convention this July. We will also be launching our third campaign for the Leukemia and Lymphoma Society in Fall 2017. The Phi Sigma Rho Foundation is looking forward to another great philanthropy campaign!

\$26,546

of \$20,000 Goal in December 2016

Top Teams:

University of Michigan - Eta

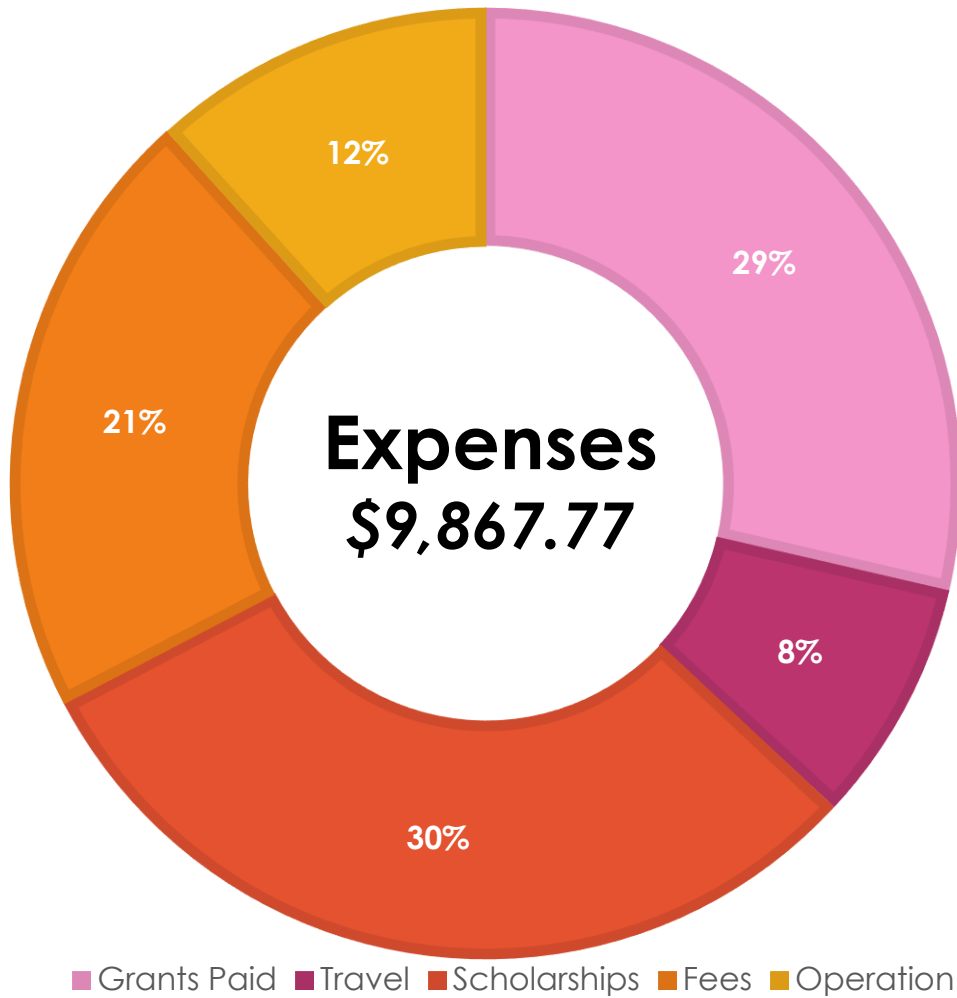
Vanderbilt University - Alpha Eta

Purdue University - Alpha

Top Individual

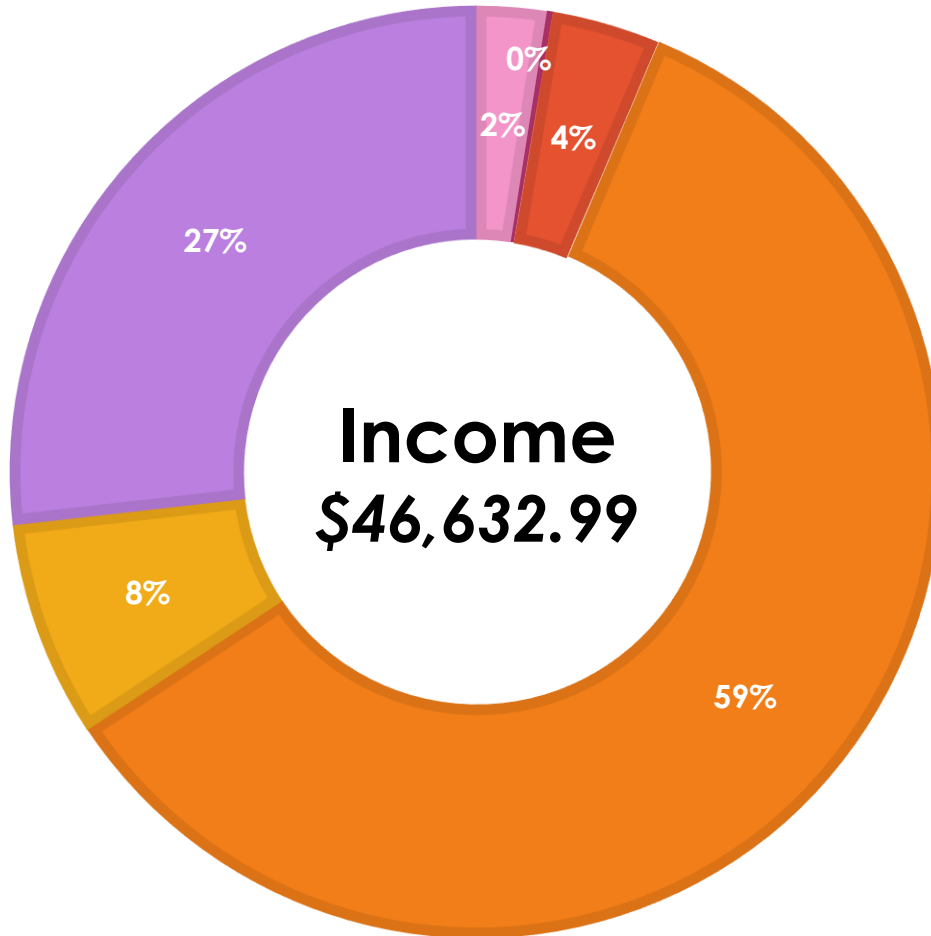
Hetal Khatri, *University of California, San Diego* – Chi

Financial Statement



Grants Paid	\$2,823.65	29%
Travel	\$819.84	8%
Scholarships	\$3,000.00	30%
Fees	\$2,068.94	21%
Operation	\$1,155.34	12%

Financial Statement



- Internet Affiliates
- Conference/Convention Fund
- LEAP Fund
- Scholarship Fund
- Sarah Rogers McClure Memorial Scholarship Fund
- General Fund

	\$100.00	0.2%	Conference/Convention Fund
	\$1730.00	3.7%	LEAP Fund
Donations	\$27,670.00	59.3%	Scholarship Fund
	\$3,500.00	7.5%	Sarah Rogers McClure Memorial Fund
Internet Affiliates	\$12,499.38	26.8%	General Fund
	\$1,133.61	2.4%	

Celebration of Annual Donors

Every gift to the Foundation is important, and we want to thank each donor for their support. From the largest donors in our 1984 Club to the Key Club donors, every donation supports and inspires Phi Rho's across the country! **Thank you** for your role in building the Foundation.

Additionally, we would like to give a special thank you to our corporate sponsors for 2016.

Annual Donor Recognition Levels

Star Club	\$10,000 +	Rising Sun Club	\$1,000 - \$1,983
Prosperity Club	\$5,000 - \$9,999	Pearl Club	\$500 - \$999
Loyalty Club	\$2,500 - \$4,999	Pyramid Club	\$250 - \$499
1984 Club	\$1,984 - \$2,499	Key Club	\$100 - \$249

2016 Annual Donors

▶ Star Club

Lewis & Carol McDonald Family

▶ Loyalty Club

Jennifer Roach

▶ 1984 Club

Charlene Ann Yauch

▶ Rising Sun Club

Christine Jackson
Katherine Erin Hoppert
Carol, Robert, & David Rogers
Anonymous Donor

▶ Pearl Club

Amara Debra Bojrab
Kathleen Marie Lyall

▶ Pyramid Club

Erika Bustos
Hillary Cartimandua Emer
Andrea Lynne Knodel
Amy Elizabeth Mazzanti

▶ Pyramid Club Cont.

Brittany Nicole Potter
Kathryn Shrock

▶ Key Club

Marcie Aydelotte
Janelle Becker
Norris Blake
Lisa Diane Canterbury
Carol & Steve Hart
Michelle Cornell
Michelle Eismann
Dominique Fantasia
Christopher Given
Elizabeth Greco
Julie Marie Hayden
Laura Kiely
Tonya Newsom
Wenda Ostrem
Teresa Phillips
Lorraine Jo Porter
Renee Rigrish
Rebecca Riley

▶ Key Club Cont.

Lisa Saba
Lynne Shigley
Jennifer Taggart-Fisher
Chrysa Marie Theodore
Patrice Thompson
Margaret Walsh
Robert Ware
Mary Beth White
Jennie Womble

▶ Corporate Donors

Amgen Foundation
Anheuser Busch
The Benevity Community Impact Fund
Diet Bet
Exelon Corp
GE Foundation
Lubrizol Foundation
United Way
United Way of Lancaster County

Celebration of Lifetime Donors

The Lifetime Donors are members and friends who are committed donors to the Phi Sigma Rho Foundation. We would like to give a special thank you to those donors who have been making continuous gifts to over multiple years. **Thank you** for your part in building a strong Foundation for Phi Rho's everywhere.

Lifetime Donor Recognition Levels

Order of the Orchid	\$1,000,000 +	Influencer Society	\$25,000
Platinum Society	\$500,000	Visionary Society	\$10,000
Silver Society	\$250,000	Scholarship Society	\$5,000
Founders Society	\$100,000	Friendship Society	\$2,500
Changemaker Society	\$50,000	Encouragement Society	\$1,000

Life Time Donors

▶ Influencer Society

Lewis & Carol McDonald Family

▶ Visionary Society

Elana Chapman
Charlene Yauch

▶ Scholarship Society

Heather Lazar
Laura Day
Jennifer Roach

▶ Friendship Society

Allison Lenhoff
Christine Jackson
Janet Reyna
Leanne Price
Nicolette Yovanoff
Carol, Robert, & David Rogers
Hillary Cartimandua Emer

▶ Encouragement Society

Amanda Brown
Amy Mazzanti
Erika Bustos
Kat Wenger
Katherine Shesko
Margarett Allen
Mona Kim
Rachel Chicchi
Rebecca Trudeau
Sara DaSilva
Sarah Fisk
Teresa Phillips
Katherine Erin Hoppert
Brittany Nicole Potter

Legacy of Giving

Our programs would not be possible without the generous support and service of our volunteers and donors. Volunteering for or donating to the Foundation supports professional, educational, philanthropic, and leadership development opportunities for the sisters and friends of Phi Sigma Rho Sorority. Everyone has different strengths so any contribution makes a difference towards the betterment of hundreds of aspiring women! Make a difference today with these many ways of giving back to the Foundation!

▶ Volunteer Your Time

Volunteering will not only better yourself but also help the Foundation. We have lots of volunteer opportunities or you can send us your ideas. Make it count and be the change you want to see!

▶ Make a Cash Donation

No matter the amount, your gift to the Foundation will help us continue sponsoring and developing the future of women in STEM fields. We are a 501(c)3 charitable organization, so donations are tax-deductible! Send us your gift today via our website or send a check to Phi Sigma Rho Foundation, P.O.Box 7021, Westchester, IL 60154.

▶ Make a Corporate Donation

Many companies encourage their employees to donate by matching the donation, sometimes dollar-for-dollar or even more. Check with your company's HR to see if they offer such programs to maximize your contribution. We also offer corporate recognition if your company wishes to make a donation or sponsor a program. For questions or more information, please contact [Christine Jackson](#).

▶ Make a Stock Donation

Donating shares of stocks and mutual funds has double tax benefits— on the current market value of the donation and on the unrealized capital gain of the shares. Remember, this only applies to shares that you have owned for more than a year. Contact us for more information, or to get started call Waukesha Investments at (262) 549-8596.

▶ Support Us through Affiliate Links

We are registered with Amazon Smile, GoodSearch, and GoodShop. Register an account with them and designate the Phi Sigma Rho Foundation as your charity. Additionally, we work with DietBet as a regular fundraiser.

▶ Set Up a Reoccurring Donation

What does \$10 a month mean to you? How about \$50? The Phi Sigma Rho Foundation makes it easy to set up recurring donations from your bank account with your authorization. These small donations that you may hardly miss add up to big benefits for the Foundation in achieving its goals. Email the [VP of Donor Engagement](#) or visit our website for more information on how you can set up your recurring donation today!

Phi Sigma Rho Foundation

P.O. Box 7021, Westchester, IL 60154

www.phisigmarhofoundation.org

[Email Us](#) | [Like our Page](#) | [Follow Our Tweets](#)
[Follow Our Instagram](#) | [See what we're Pinning](#)