

Phi Sigma Rho Foundation

Annual Report | 2018



PHISIGMARHOFFOUNDATION.ORG

Table of Contents

Letter from the President.....3

About the Foundation.....4

Board of Directors & Volunteers.....5

Grants.....6

Scholarships.....7

Light the Night.....11

Financial Statement.....12

2018 Annual Donors.....13

Lifetime Donors & Circle of Contributions.....14



Letter from the President

Dear Sisters and Friends,

I'm pleased to share with you the 2018 Annual Report of the Phi Sigma Rho Foundation. It's an exciting time for the Foundation, and we are grateful for the support of our sisterhood. Your friendship, encouragement, and generosity are helping us to build bright futures for our sisters.

I am also thankful for the dedicated group of volunteers committed to enhancing the lives of Phi Sigma Rho members through the Foundation's efforts. Together, we're empowering more women to pursue their academic goals and reach their potential through Foundation scholarships and grants to the Sorority every year. Nothing gives the Foundation greater pride than to make a positive change in the life of a sister, and YOU are a major part of this!

I invite you to take a deeper dive into our programs and the successes we are celebrating from 2018 on the next pages of this report. As we look to the future, we see even more opportunities to accelerate our support to meet the needs of our growing sisterhood. Your generosity is key in growing our Sorority programming opportunities, and we are thankful for the impact your continued support has made. We also invite you to see these programs first hand at the National Convention in Arizona this summer, where we will also be celebrating 35 years of the Phi Sigma Rho sisterhood.

Together, we are building the future for the next generation of Phi Sigma Rho. Thank you for your belief in the power of our sisters and Phi Sigma Rho.

With Phi Rho Love,

JANELLE BECKER

Ohio State Beta Chapter
Phi Sigma Rho Foundation President



About the Foundation



The Phi Sigma Rho Foundation was founded and incorporated in 2005 to give members and friends an opportunity to support the growing sisterhood of Phi Sigma Rho through charitable and tax-exempt gifts. The Phi Sigma Rho Foundation is governed by a Board of Directors that carries out its mission through programming with scholarships, grants for leadership and educational programming, and national philanthropic campaigns. With the generous support of Phi Rhos across the country through annual contributions, planned gifts, and endowed funds, the Foundation is able to help build the future for Phi Sigma Rho sisters to be their best.

Mission

The Phi Sigma Rho Foundation exists to promote social responsibility, personal integrity, and lifelong enrichment by providing professional, educational, philanthropic, and leadership development opportunities for the members and friends of Phi Sigma Rho Sorority.

Vision

The advancement of Phi Sigma Rho Sorority and the community through the encouragement of selfless giving.

Board of Directors



President

Janelle Becker

Secretary

Lexi Heironimus

Treasurer

Rosalie Krob

VP of Strategy

Becky Schmidt

VP of Programming

Dominique Fantasia-Amin

VP of Development

Daisy Gill

VP of Donor Engagement

Samantha Rohner

VP of Publicity

Ashley Mohler

Ex Officio

Christine MacLaren

Volunteers

Assistant Treasurer

Christine Jackson

Collegiate Affairs

Kendall Murphy

HR Manager

Bridget Fricke

Philanthropy Chair

Devin Stanke

Publicity Chair

Blair Pellat

Corporate Chair

Christine Jackson

Webmaster

Kat Wenger

Alumnae Affairs

Anita Jain

Investment Chair

Charlene Yauch

Investment Committee

Kathy Bradley

Lara Day

Scholarship Chair

Victoria Platt

Scholarship Committee

Katie Shesko

Julie Hayden

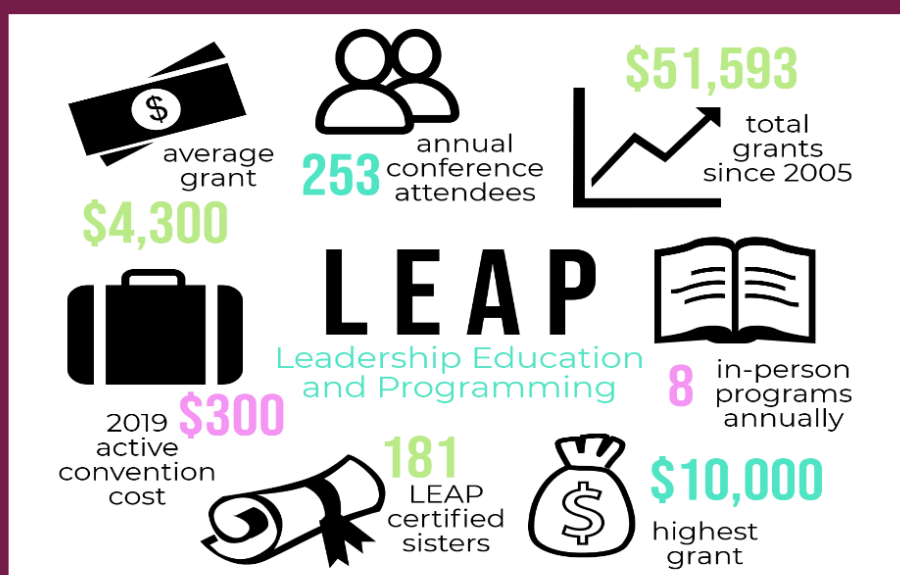
Beth Holloway

Grants

The Foundation provides educational grants to Phi Sigma Rho through a formal grant process. The Sorority uses these grants to support LEAP (Leadership, Education, and Programming) sessions at National Convention and Leadership Conferences.

In 2018, the Foundation approved a grant of \$6,500 for National Conference at Purdue. This grant helped to fund sessions such as Leadership in High Achiever Land, Creating a "Yes, and" Environment, Conflict Resolution, and Five Attitudes in the Office. Sessions are structured to form a pyramid, being designated as a base, building block, or top. Over the course of a Convention or Conference, sisters can become LEAP certified by attending at least one session from each category, effectively constructing their LEAP pyramid.

All scholarships and grants provided by the Foundation are 100% supported by the generous contributions of our donors. To this point, we have been able to provide a total of \$51,593 in grants to the Sorority, providing support for the personal and professional growth of Phi Rho sisters and friends. Though much of the cost for National Conventions and Leadership Conferences are eligible for Foundation grants, at times the full amount may not be granted due to limited funds. With the help of our generous donors, we hope to increase future grant awards to fully cover the Sorority's leadership development and educational programs.



Scholarships

This year the Foundation awarded three \$1,000 scholarships to exceptional sisters at Conference. To date, the Foundation has awarded \$28,000 in scholarships to 38 sisters representing 21 chapters. This year, the Foundation also announced a fourth \$1,000 scholarship, the Philanthropy & Service Scholarship, to be awarded for the first time at Convention 2019 in Scottsdale, AZ.



3

SCHOLARSHIPS

200

APPLICANTS

38

AWARDS

\$28,000

DOLLARS

Ways to Give

Donations to our scholarship fund can be made at phisigmarhofoundation.org, by specifying the Scholarship Fund or Sarah Rogers McClure Memorial Scholarship Fund when selecting a fund for your donation.



Leadership Scholarship

"It is such an honor to receive the Phi Sigma Rho Foundation Leadership Scholarship. For most of my life, I've been steadfastly dedicated to women's rights, and that passion found a lifelong home in the fearless leaders in Phi Sigma Rho."

Camille Stuczynski
University of California, Berkeley

Merit Scholarship

"With college costs on the rise, it is becoming more and more difficult to participate in labs and extracurriculars. With this donation, I will be able to continue working in my biomaterials research lab and focus more fully on my studies."

Riley Blumenfield
University of Connecticut





Sarah Rogers McClure Memorial Scholarship

"I would like to thank the Phi Sigma Rho Foundation and all the donors for providing me with assistance to further my education.

Sarah's kindness, attitude, and work ethic have inspired many people and I strive to one day be able to impact as many people as she has."

Amy Ostrem
University of Cincinnati

Light the Night



Top Teams

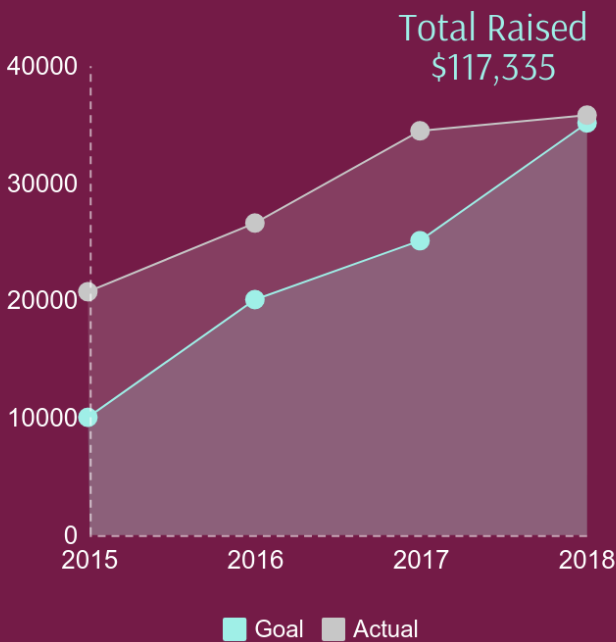
- Purdue - Alpha
\$5,412
- Ohio State - Beta
\$4,515
- UC Berkeley - Alpha Theta
\$4,194

Top Individuals

- Emily Nehaus
\$4,095
- Stephanie Thornton
\$1,145
- Cathy Nash
\$683

Since 2010, leukemia and lymphoma research has been one of the major national philanthropies of Phi Sigma Rho. Having sisters and family members who experienced blood cancers first hand, Phi Sigma Rho wanted to have a part in helping find a cure. In 2015, the Phi Sigma Rho Foundation set-up participation with the Leukemia & Lymphoma Society's Light the Night Corporate Partnership Program. With this program, active chapters and alumnae associations can easily find and organize Light the Night walks or create their own event to benefit the Leukemia & Lymphoma Society.

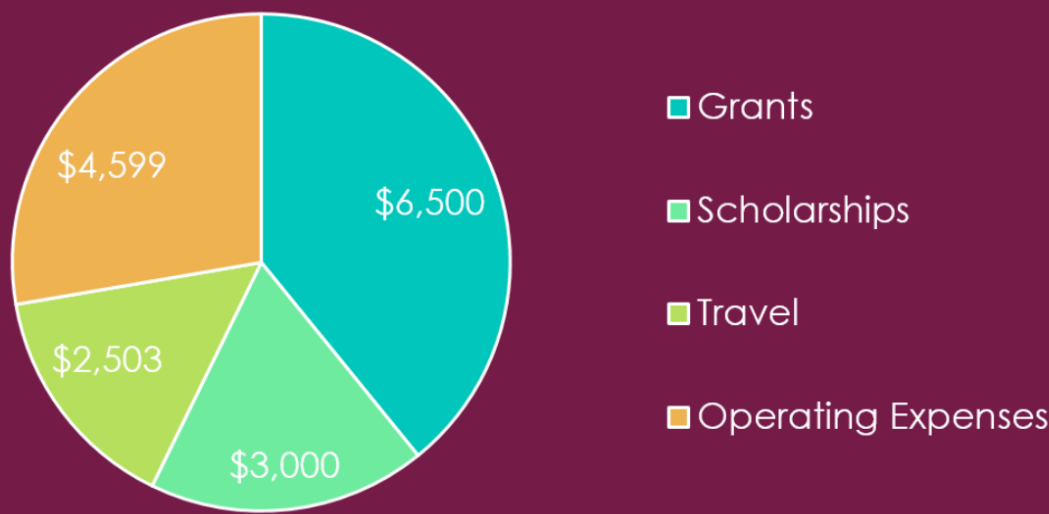
Donations Since 2015



Financial Statement

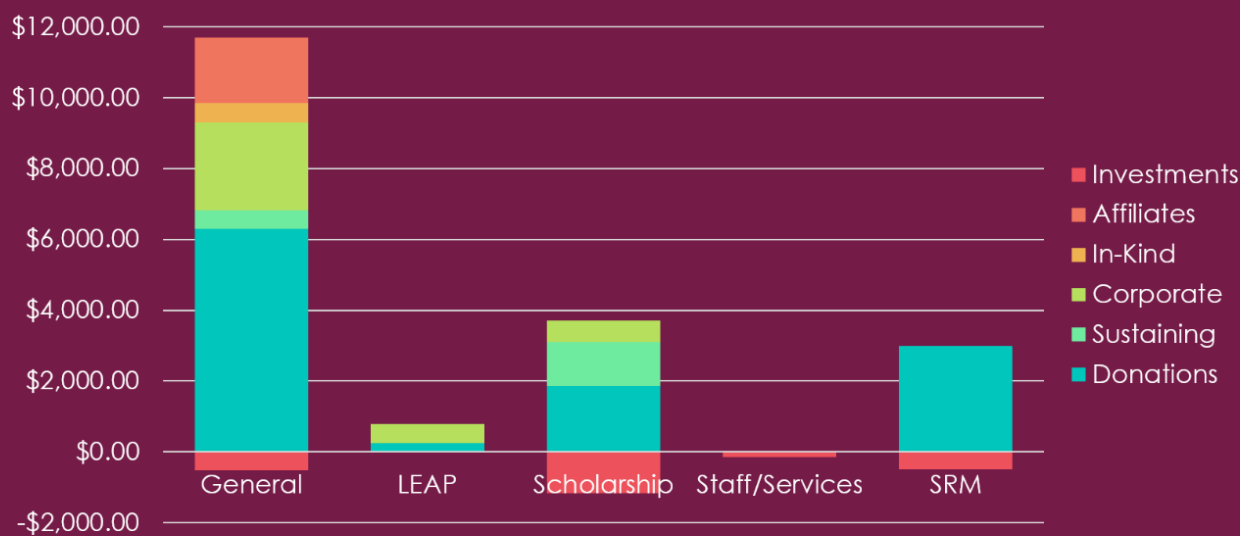
Expenses

\$16,602



Income

\$16,890



2018 Annual Donors

Loyalty Club \$,2500

Charlene Yauch

Rising Sun Club \$1,000

Carol, Robert, and David Rogers

Christine Jackson

Jennifer Roach

Pearl Club \$500

DietBet

Dominique Fantasia

Edward Lifesciences Foundation

Janelle Becker

The Benevity Community Impact Fund

United Way of Central New Mexico

Pyramid Club \$250

AmazonSmile

Amy Mazzanti

Boeing

Elishka Jepson

Haley Moeder

Jessica Sofka

Joe and Betty Griffith

Mary Beth White

Rachel Kurzeja

Renee Pelan

Samantha Rohner

United Way of Lancaster County

YourCause

Key Club \$100

Abigail Schaar

Alexandra Heironimus

Alexis Seibold

Alpha Alpha Chapter - Youngstown

Anna Lou

Ashley Mohler

Brittany Ryan

Cameron and Louise Bunyan

Christopher Given

Daisy Gill

Elizabeth Dapp

Key Club continued

Janet Reyna

Jeff Gibbs

Joseph Mohler

Kendall Murphy

Kristina Schnell

Laurie Crosson

Leanne Price

Michelle Linenberger

Mikayla Hopkins

Nicole Vitale

Nikki Delon

Olanrewaju Oriowo

Olivia Paganelli

Phylicia Trottman

Rachel Chicchi

Rebecca Riley

Rebecca Schmidt

Rosalie Krob

Samantha Bierhorst

Shawna Moore

Sydney Negro

United Way Greater Twin Cities

Sigmund Club \$50

Alexandria Caliguire

Anheuser Busch

Bridget Wagner

Connor Bowman

Ellen Clunk

Hillary Emer

Jordan Bair

Lauren Pelan

Lisa Canterbury

Lynn Schnell

Michele Stoutenborough

Nordstrom

Lifetime Donors

Influencer Society \$25,000

Lewis A and Carol W McDonald Charitable Trust

Visionary Society \$10,000

Charlene Yauch
Elana Chapman
Jennifer Roach

Scholarship Society \$5,000

Carol, Robert, and David Rogers
Christine Jackson
Heather Lazar
Lara Day

Friendship Society \$2,500

Allison Lenhoff
DietBet
Hillary Emer
Janet Reyna
Katherine Hoppert
Leanne Price
Nicolette Yovanof
Teresa Phillips
The Benevity Community Impact Fund

Encouragement Society \$1,000

Abby Schwartz
Alexandria Caliguire
Amanda Brown
Amy Mazzanti
Brittany Potter
Dominique Fantasia-Amin
Enterprise Holdings Foundation
Erika Bustos
Exelon Corp
Janelle Becker
Kat Wenger
Katherine Shesko
Margaret Allen
Mary Beth White
Mona Kim
Rachel Chicchi
Rebecca Trudeau
Rosalie Krob
Sarah Fisk

Circle of Contribution

Donors become part of the Circle of Contribution after maintaining an annual giving level for 5 consecutive years.

Elana Chapman
Charlene Yauch
Jennifer Roach
Christine Jackson
Carol, Robert, and David Rogers
Hillary Emer
Erika Bustos
Brittany Potter
Mary Beth White
Rebecca Riley
Marcie Aydelotte

Help us Build the Future

Contributions to the Phi Sigma Rho Foundation can be made in the following forms:

- Cash
- Check
- Online Donations
- Venmo
- Stock
- Corporate Match

Visit phisigmahofoundation.org for details.

Phi Sigma Rho Foundation

P.O. Box 7021

Westchester, IL 60154

@PSRFOUNDATION

